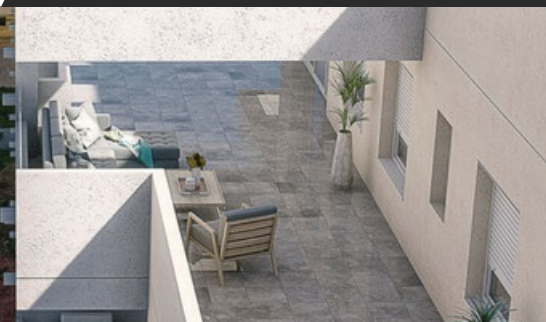




**405.000 €**



## Description:

New Development: Prices from 405,000 € to 530,000 €. [Beds: 2 - 4] [Baths: 2 - 2] [Built size: 94.00 m2 - 142.00 m2]

Welcome to your new home, located in Nueva Andalucía, just minutes from Puerto Banús and San Pedro Alcántara.

Discover phase XV of our new housing development project in Nueva Andalucía, Marbella, a neighborhood in full expansion that continues to incorporate businesses and services into the area.

A magnificent building with a modern design and avant-garde architectural details, such as its peak-shaped corner, with high-quality finishes that guarantee total satisfaction and maximum comfort for residents.

The building continues the line of the previous development, perfectly integrating into the visual landscape of the area.

Excellent location with panoramic views of the coast

The building is just 5 minutes from the beach and several golf courses, also enjoying excellent panoramic views of the coast and all the comforts

## Characteristics:

### Setting:

Close To Golf, Close To Shops, Close To Sea, Close To Town, Close To Schools

### Orientation:

North, East, South, West

### Condition:

New Construction

### Pool:

Communal

### Climate Control:

Central Heating

### Views:

Sea, Panoramic, Garden, Pool

## Location: MARBELLA

Type of the property	Apartment
Bedrooms	2
Bathrooms	2
Built	94m <sup>2</sup>
Terrace	5m <sup>2</sup>